

COMPANY PROFILE



ADDRESS: KINGDOM OF SAUDI ARABIA - ALKHOBAR CITY – KHADIM
AL HARAMAIN ASHARIFAIN ROAD – AL AQRABIYAH DIST. – AL JOMAIH
AUTOMOBILES CO (3688 Building) (Back Entrance) – 1TH - FLOOR
OFFICE 106 - TEL: 013 889 2000 – 013 859 1212 - FAX : 013 859 9831
EMAIL: info@convalley.net WEBSITE: www.convalley.net
P.O.BOX : 77331 AL-KHOBAR 31952

Introduction

Con Valley was established in February 2010, and since then we have grown into a well-known and respected contractor, we have also become acquainted with the building challenges faced in larger projects especially in the upper class market.

The company structure is well suited to the demands and challenges faced in the market. Operational structures are also in place to ensure proper progress and quality of workmanship at all sites.

All company administration takes place at the company's head office in Al-khobar. The administration is driven by a team of dedicated staff who supply the necessary administration to back up the operational side of the business.

Management Staff:

- Project managers
- Site foreman
- Quantity surveyor
- Crafts men

Administrative Staff:

- Accountant
- Orders / creditors clerk
- Receptionist

Each construction area consists of the following:

- Area Managers
- Project Managers
- Site Foreman

Services

1.1 Civil & structural construction

- Buildings construction ,repairs, maintenance and renovation
- Portable construction installation
- Drainage, sewage system, water system construction
- Earth work/site preparation/clearing
- Foundation/piling
- Fencing fabricated walls and wire fences

1.2 Electrical & Instrumentation

- Construction and installation
- Overhead and underground cabling
- Installation and repair of meters
- Cable trays installations
- Lighting systems
- Fire alarm and fire protection systems
- Air conditioning systems and equipments

1.3 Mechanical and Plumbing

- [Residential and Commercial Plumbing](#)
- [Plumbing Inspections](#)
- [Leak Detection](#)
- [Residential and Commercial Drainage](#)
- [Water Tanks](#)
- [Central Heating](#)
- Gas fittings

1.4 Project management services

Construction Management/monitoring

Resources

2.1 Manpower List

	MANAGEMENT / PROFESSIONAL PERSONNEL	TOTAL
1	GENERAL MANAGER	1
2	OPERATION MANAGER	1
3	CONSTRUCTION MANAGER	2
4	MAINTENANCE MANAGER	1
5	PROC./BUSINESS MANAGER	1
6	ENGINEERING MANAGER	1
7	QA/QC MANAGER	1
8	SAFETY & HEALTH MANAGER	2
9	MATERIALS MANAGER	2
10	ADMINISTRATIVE SUPERVISOR	4
11	GOVERNMENT RELATIONS	5
12	ACCOUNTANT	3
13	SENIOR SCHEDULER	2
14	COMPUTER OPERATOR	1
15	MATERIALS CONTROLLER	4
16	MATERIALS EXPEDITER	2
17	DRAFT MAN	2

	MANAGEMENT / PROFESSIONAL PERSONNEL	TOTAL
18	QA/QC INSPECTOR	5
19	QA/QC PAINTING INSPECTOR	2
20	SAFETY SUPERVISOR	4
21	CAMP SUPERVISOR	6
22	SURVEYOR	5
23	PROJECT MANAGER	5
24	ENGINEER, CIVIL	8
25	ENGINEER MECHANICAL	2
26	ELECTRICAL ENGINEER	2
27	SUPERINTENDENT, FAB SHOP	10
28	SUPERINTENDENT, CIVIL	10
29	SUPERINTENDENT, ELEC'L/INSTR.	4
30	GENERAL FOREMAN	14
31	FORMAN, LABOR	7
32	EQU/OPER.	13
33	STEEL FIXER	25
34	CARPENTERS	27
35	MASON	22
36	TILE SETTER	24
37	STRUCTURAL WELDER	7
38	FABRICATOR	3

	MANAGEMENT / PROFESSIONAL PERSONNEL	TOTAL
39	PIPEFITTERS	11
40	PIPEFITTER HELPERS	23
41	PLUMBER	17
42	DRIVER - HEAVY	4
43	DRIVER - LIGHT	9
44	WAREHOUSEMAN	4
45	TIMEKEEPERS	6
46	JANITOR	7
47	LABOR	62
	T O T A L	381

2.2 EQUIPMENTS LIST

	DESCRIPTION	CAPACITY
	<u>EARTHWORKS:</u>	
1	DOZER, CATERPILLAR	D-8/D-9
2	GRADER, CATERPILLAR	G-12
3	BACKHOE, CATERPILLAR	3/4 CY
4	BACKHOE/LOADER, RUBBER TIRE, CASE	3 CY/1/2 CY
5	BACKHOE/LOADER, RUBBER TIRE, JCB	3/4 CY

	DESCRIPTION	CAPACITY
6	ENDLOADER, CATERPILLAR	6 CY
7	ENDLOADER, CASE	2 CY
8	BOBCAT, GEHL	1/4 CY
9	END LOADER, KUMATSU	3 CY
10	ROLLER COMPACTOR, INGERSOLL RAND	10 ton

	DESCRIPTION	CAPACITY
	<u>TRANSPORT:</u>	
11	DUMP TRUCK, MERCEDES BENZ	20 CY
12	TRUCK TRACTOR, MERCEDES BENZ	30 TON
13	TRAILER, HIGH BED, FRUEHAUF	30 TON
14	TANKER, WATER, MERCEDES BENZ	3000 GAL.
15	TANKER, WATER, MERCEDES BENZ	5000 GAL
16	CRUDE OIL TANKER WITH PUMP,GMC	5000 GAL
17	TANKER, SEWAGE, GMC	9000 GAL.
18	FUEL TANKER, GMC	1500 GAL
19	FUEL TANKER, GMC	300 GAL
20	LUBE TRUCK, GMC	6 REELS

	DESCRIPTION	CAPACITY
	<u>LIFTING EQUIPMENT:</u>	
21	CRANE, RT, HYD., GROVE	50/55 TON
22	CRANE, RT, HYD., LORAIN	35 TON
23	CRANE, TRUCK MTD., HYD., GROVE	30 TON
24	CRANE, RT, HYD., GROVE	40 TON
25	FORKLIFT, HYSTER	2.0 TON
26	FORKLIFT, HYSTER	7.5 TON
27	FORKLIFT, CATERPILLAR	25 TON
28	MANLIFT, 4x4x4, SIMMONS	40' - 0"
29	MANLIFT, 4X4X4 , JLG	40' - 0"
30	TOWER CRANE YANG MAU	10 TON
31	TOWER CRANE LIEBHERR	6 TON
32	TOWER CRANE	8 TON

	DESCRIPTION	CAPACITY
	<u>PERSONNEL CARRIERS:</u>	
45	BUS, TATA	66 PASSENGER
46	BUS, GMC	50 PASSENGER
47	BUS, CHEVROLET	50 PASSENGER

	DESCRIPTION	CAPACITY
51	WHEEL MOUNTED, DIESEL, INGERSOL RAND	CFM 250
52	STATION MOUNTED, ELECTRIC, BALMA	15 H.P.

	DESCRIPTION	CAPACITY
	<u>HYDROTEST PUMPS:</u>	
56	HYDROTEST PUMP, GRACO	10,000 PSI
57	HYDROTEST PUMP, GRACO	6,000 PSI

	DESCRIPTION	CAPACITY
	<u>CAR/PICKUPS:</u>	
33	SEDAN, TOYOTA	6 PASS.
34	SEDAN, TOYOTA	6 PASS.
35	LANDCRUISER, 4X4, TOYOTA	2 CARS
36	SUBURBAN, CHEVROLET	1/2 TON
37	TOYOTA 4 RUNNER	1/2 TON
38	PICKUP, TOYOTA HILUX	1/2 TON
39	PICKUP, CREWCAB, TOYOTA HILUX	1/2 TON
40	PICKUP, 4X4, CHEVROLET	3/4 TON
41	MECHANIC TRUCK, W/ TOOL BED, GMC	3/4 TON
42	AMBULANCE, TOYOTA	3/4 TON
43	PICK-UP 4 X 4, GMC	3/4 TON
44	PICK-UP 4 X 4, TOYOTA	

	DESCRIPTION	CAPACITY
	<u>AIR COMPRESSORS:</u>	
48	WHEEL MOUNTED, DIESEL, INGERSOLL/RAND	CFM 750
49	WHEEL MOUNTED, DIESELATLAS COPCO	CFM 350
50	WHEEL MOUNTED, DIESEL, INGERSOL RAND	CFM 375/380

	DESCRIPTION	CAPACITY
	<u>COMPACTORS:</u>	
53	ROLLER, DIESEL, INGERSOL/RAND	10 TON
54	ROLLER, DIESEL, INGERSOL/RAND	300 KILO
55	PLATE, GAS, HORY	5 H.P.

	DESCRIPTION	CAPACITY
	<u>GENERATORS:</u>	
58	250 KW, KOMATSU	60 Hz 440V.
59	410 KW, CATERPILLAR	60 Hz 220 V.
60	125 KW, KOMATSU	60 Hz 220 V.
61	110 KW, CATERPILLAR	60 Hz 220 V.

	DESCRIPTION	CAPACITY
62	30 KW, ONAN	60 Hz 220 V.
63	23 KW, ONAN	60 Hz 220 V.

	DESCRIPTION	CAPACITY
	<u>ASPHALT/CONCRETE CUTTERS;</u>	
66	DIESEL Pwrd., WHEEL Mtd.	14" BLADE

	DESCRIPTION	CAPACITY
	<u>REBAR EQUIPMENT;</u>	
69	REBAR CUTTER, ELECTRIC Pwrd.	1 1/2"
70	REBAR BENDER, ELECTRIC Pwrd.	1 1/2"

	DESCRIPTION	CAPACITY
	<u>TEST EQUIPMENT, E & I</u>	
71	MEGOHMMETER, 1 KV, HAND OPER.	
72	MEGOHMMETER, 5 KV, LINE OPER. 115V.	
73	PHASE & MOTOR ROTATION TESTER	
74	GROUND RESISTANCE TESTOR	
75	TRANSFORMER TURN RATIO TESTOR	
76	THERMOCPL/MILLIVOLT LOOP CALIBRATOR	
77	DIELECTRICTESTER, 115V.	
78	RELAY TESTOR	
79	BREAKER/OVERLOAD RELAY TESTOR	
80	POLYMER	
81	PHASE ANGLE METER	
82	PHASE SEQUENCE ROTATION METER	
83	OSCILLOSCOPE, 100 MHZ	
84	VIBRATION METER	
85	SMART FIELD COMMUNICATOR	
86	TEMP.CONTROLLER/FLUIDIZED SAND BATH	
87	FREQUENCY COUNTER, 100 MHZ	
88	FUNCTION GENERATOR	
89	D.C. POWER SUPPLY, 0-50 V.	
90	CALIBRATOR UNIVERSAL RTD	

	DESCRIPTION	CAPACITY
	<u>MIXERS;</u>	
64	CONCRETE, DIESEL Pwd.	1/2 CY
65	MORTAR, DIESEL Pwd.	1/2 CY

	DESCRIPTION	CAPACITY
	<u>PIPE EQUIPMENT;</u>	
67	PIPE/CONDUIT BENDER, 115V.	1/2" THRU 2"
68	PIPE/CONDUIT BENDER, 115V.	2 1/2" THRU 4"

	DESCRIPTION	CAPACITY
91	CALIBRATOR UNIVERSAL RTD	
92	INDICATOR THERMOCOUPLE	
93	P.P.S. FLEXITESTOR	
94	MINI-TEMP CALIBRATOR	
95	CURRENT CALIBRATOR	
96	FREQUENCY CALIBRATOR	
97	MULTIMETER	
98	MULTIMETER, DIGITAL	
99	MULTIMETER, ANALOG, CLAMPON 1"	
100	MULTIMETER, ANALOG, CLAMPON 2"	
101	MULTIMETER, DIGITAL, POCKET SIZE	
102	MULTIMETER, DIGITAL, BENCHTOP	
103	CALIBRATOR	
104	DECADE BOX,	
105	WALLY BOX, 0-30 PSI	
106	WALLY BOX, 0-1660 IN/H2O	
107	MANOMETER, 60-0-60	
108	PRESSURE CALIBRATOR, 0-30 IN/H2O	
109	PRESSURE CALIBRATOR	
110	DEADWEIGHT TESTOR	
111	HYDRAULIC CALIBRATOR,	

	DESCRIPTION	
112	GUAGE COMPARATOR, OIL ONLY	
113	QUICK TEST HAND PUMP, PRESSURE	
114	QUICK TEST HAND PUMP, VACUUM	
115	COMPOUND TESTGUAGE	
116	ANALOGUE TACHOMETERS	0 - 50,000
117	ANALOGUE TACHOMETERS	0 - 10,000
118	TEST GUAGE, VACUUM	
119	TEST GUAGE	- 30 PSI
120	TEST GUAGE	0 - 60 PSI
121	TEST GUAGE	0 - 100 PSI
122	TEST GUAGE	0 - 200 PSI
123	TEST GUAGE	0 - 400 PSI
124	TEST GUAGE	0 - 600 PSI
125	TEST GUAGE	0 - 1000 PSI
126	TEST GUAGE	0 - 1500 PSI
127	TEST GUAGE	0 - 3000 PSI
128	TEST GUAGE	0 - 5000 PSI
129	TEST GUAGE	0 - 10,000 PSI
130	HEADSETS, SOUND POWER,(2 EA.)W/ CASE	

	DESCRIPTION	
	<u>COMPACTORS:</u>	
131	ROLLER, DIESEL	10 TON
132	ROLLER, DIESEL	300 KILO
133	PLATE, GAS	5 H.P.

	DESCRIPTION	
	<u>HYDROTEST PUMPS:</u>	
134	HYDROTEST PUMP	10,000 PSI
135	HYDROTEST PUMP	6,000 PSI

	DESCRIPTION	
	<u>TOOLS:</u>	
136	CABLE CRIMPER W/ DIES	0 - 750 MCM
137	CABLE CUTTERS	0 - 750 MCM
138	CALIPHERS, INSIDE, SET	8",12",1 6'
139	CALIPHERS, OUTSIDE	8",12",1 6'
140	CALIPHER,VERNIER	12
141	CALIPHER,VERNIER	8"
142	CALIPHER,VERNIER	6"
143	CENTERPUNCH,METAL,MAC HINIST	6" LONG

	DESCRIPTION	
144	CLEANER,WATER/STEAM,JET SPRAY	TO 1500 PSI,WHEEL MTD.
145	CLEANER,WATER/STEAM,JET SPRAY	TO 3000 PSI,SKID MTD.
146	DIAL INDICATOR, W/ MAGNETIC BASE	0 - 250" GAUGE
147	DIES,W/HOLDERS,NPT,MANUAL, SET	1/2" - 2"
148	DIES,BOLT,UNF/UNC,W/ HOLDER,SET	TO 1 1/4",UNF & UNC
149	DIES,BOLT,METRIC,W/ HOLDER,SET	TO 32 MM
150	DRILL, MOTOR,HAND HELD, 110 V.	3/8" CHUCK
151	DRILL, MOTOR,HAND HELD, 110 V.	1/2" CHUCK
152	DRILL, MOTOR,HAND HELD, 110 V.	3/4" CHUCK
153	DRILL,MAGNETIC BASE, 110 V.	1 1/2" DIAMETER CAPACITY
154	DRILL,SHOP,STAND MTD, 110 V.	1 1/2" DIAMETER CAPACITY
155	DRILL, CONCRETE	TL-22
156	DRILL, CONCRETE	TL-72
157	DRILL BIT,H.S.TWIST,FOR METAL	3/32" THRU 1.0", SET
158	DRILLBIT,ANNULAR,CARBIDE TIP,METAL	1/2" THRU 1 1/4", SET

	DESCRIPTION	
159	DRILL BIT, ROT.HAMMER,CARBIDE TIP	1/2" THRU 2", SET
160	DRILL BIT,MASONRY,CARBIDE TIP TWIST	1/2" THRU 1 1/4", SET
161	EXTRACTOR,BOLT,EASY-OUT,SET	
162	EXTRACTOR,PIPE,EASY-OUT,SET	
163	GRINDER,ANGLE ,110 V.	4" & 7" WHEEL
164	GRINDER,STRAIGHT,110 V.	4"-7" WHEEL
165	GRINDER,PENCIL,110 V.	1/4" - 2"
166	GRINDER,BENCH,110 V.	8"
167	GUAGE,PARALLEL BLOCKS	SET, MACHINIST
168	GAUGE, WEDGE, SET	SET, MACHINIST
169	GAUGE,FEELER, SETS	SET, MACHINIST
170	GUAGE,THREAD PITCH	SET, MACHINIST
171	GEAR PULLER,PROTO	20 TON
172	HAMMER,CARPENTER	STD. CLAW
173	HAMMER,BALL PEEN	1 LB.
174	HAMMER,SHOP	3 LB.
175	HAMMER,SLEDGE	8 & 10 LB.
176	HAMMER,BREAKER,PAVEMENT,PNEU	40 LBS.
177	HAMMER,CHIPPING,PNEUMATIC	10 LB.
178	HAMMER,JACK,PNEUMATIC	30 LBS.,125 PSI

	DESCRIPTION	
179	HOIST,CHAIN OPERATED	1 1/2 TON
180	HOIST,CHAIN OPERATED	5 TON
181	HOIST,HANDLE OPERATED	3 TON
182	HOIST,HANDLE OPERATED	1 1/2 TON
183	JACK,PORTAPOWER,HYD.,W / 9" BASE	10 TON
184	JACK,PORTAPOWER,HYD.,W / 9" BASE	20 TON
185	JACK,PORTAPOWER,HYD.,W / 9" BASE	50 TON
186	JACK,PORTAPOWER,HYD.,W / 4" BASE	20 TON
187	JACK,PORTAPOWER, FLG.SPREADER	10 TON
188	LADDER,ALUMINUM,EXTENSION	30 FT.
189	LADDER,ALUMINUM,"A" TYPE	12 FT.
190	LADDER,WOOD,EXTENSION	30 FT.
191	LADDER,WOOD,"A" TYPE	12 FT.
192	PUNCH,KNOCKOUT CONDUIT,HYD.	1/2" - 4"
193	SAW,HOLE,SET,GREENLEE, 110 V.	3/8" - 4" DIA.
194	SAW,SAWZALL, 110 V.	6"STRAIGHT BLADE
195	SAW,PORTABAND,HAND HELD, 110 V.	TO 4" CUTS
196	SAW,TABLE,ROTARY, 110 V.	20" BLADE
197	SAW,RADIAL ARM,ROTARY, 110 V.	12" BLADE
198	SAW,HAND,ROTARY,CARPENTERS,110 V.	8" BLADE

	DESCRIPTION	
199	SAW,TILE,CIRCULAR, 110 V.	6" BLADE
200	SCAFFOLD,TUBULAR,W/ CLAMPS,SET	LOT
201	SCRIBE,METAL,MACHINIST	8"
202	SCREWDRIVER SET FLAT	ASSORTED SIZE
203	SCREWDRIVER SET PHILIPS	ASSORTED SIZE
204	SQUARE,COMBINATION,MACHINIST	12" BLADE
205	SQUARE,FRAMING	24" LONG SIDE
206	SQUARE, TEE,MACHINIST	3 BLADES, 12"24"36
207	SURVEY,THEODOLITE W/ TRIPOD	W/ ALL ACCESSORIES
208	SURVEY,LEVEL,ENGINEERS W/ TRIPOD	W/ ALL ACCESSORIES
209	SURVEY,ROD,CHAINS,TARGETS, SETS	W/ ALL ACCESSORIES
210	TAPS,BOLT, UNC/UNF,W/HOLDER,SET	TO 1 1/4"
211	TAPS, BOLT,METRIC, W/ HOLDER,SET	TO 32MM
212	TAPS,PIPE, NPT, W/ HOLDER, SET	TO 2"
213	TORCH, OX/AC.,W/ GUAGES/HOSE SET	MANUAL CUTS AS REQ'D
214	TORCH,TRACK W/ HOSE/TRACK, 110 V.	AUTOMATIC PLATE CUTS
215	TORQUE WRENCH,MANUAL,MACHINIST	1" DRIVE

	DESCRIPTION	
216	TORQUE MULTIPLIER	4 TO 1
217	VACUUM CLEANER,INDUSTRIAL, 110 V.	1 H.P. MOTOR
218	VIBRATOR,CONCRETE,W/ ENGINE	1 1/2" - 2 1/2" STINGERS
219	VIBRATOR,CONCRETE,W/ ENGINE	1" STINGER
220	VIBRATOR,CONCRETE,AIR DRIVEN	1 1/2" - 2 1/2" STINGERS
221	WISE, PIPE, TRI-POD MTD., CLAMP TYPE	6" CAPACITY
222	WISE, PIPE, TRI-POD MTD., CHAIN TYPE	12" CAPACITY
223	WISE, WORK BENCH TYPE	6' JAW, 12" OPEN CAP.
224	WRENCH, METRIC,W/SOCKETS, SET	6 MM - 32 MM
225	WRENCH,HAMMER FOR PIPING,SET	1 1/4" THRU 4 1/2"
226	DRILL, CONCRETE	TL-22
227	DRILL, CONCRETE	TL-72
228	DRILL BIT,H.S.TWIST,FOR METAL	3/32" THRU 1.0", SET
229	DRILL BIT,ANNULAR,CARBIDE TIP,METAL	1/2" THRU 1 1/4", SET
230	DRILL BIT, ROT.HAMMER,CARBIDE TIP	1/2" THRU 2", SET

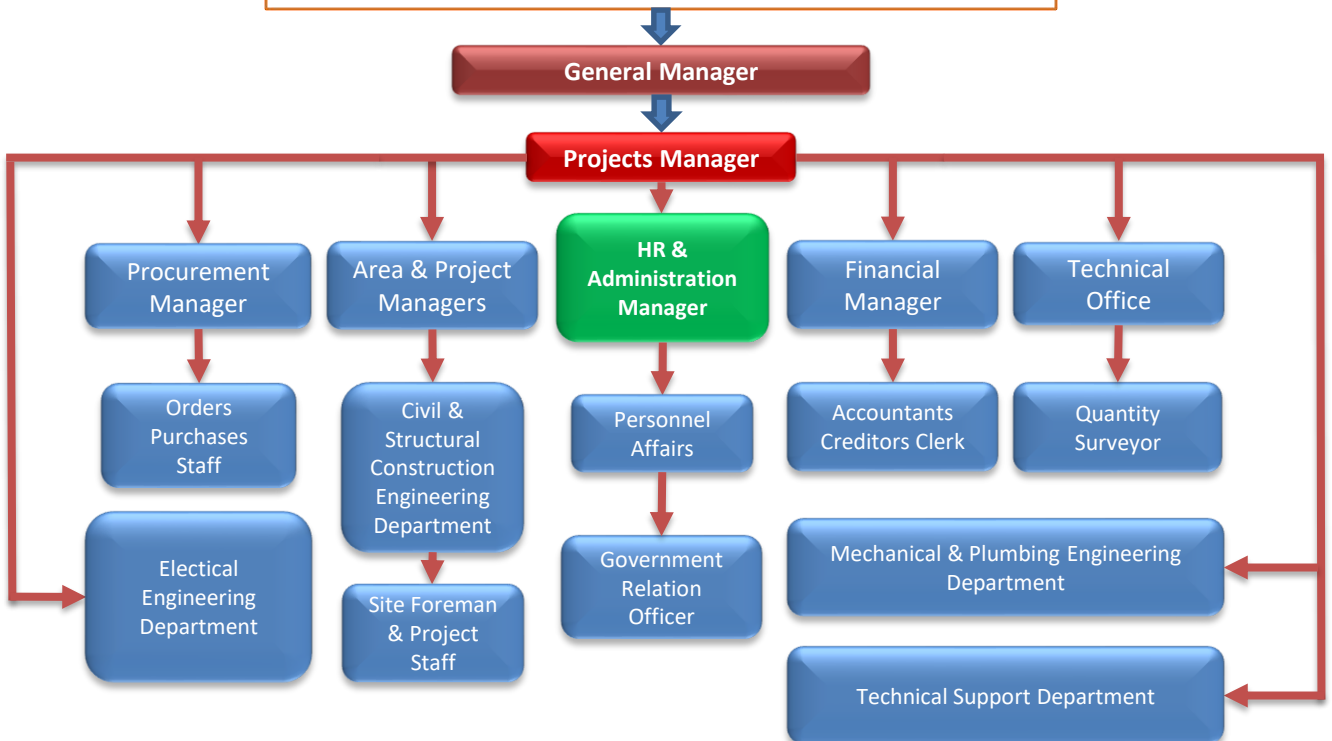
	DESCRIPTION	
231	DRILL BIT,MASONRY,CARBIDE TIP TWIST	1/2" THRU 1 1/4", SET
232	EXTRACTOR,BOLT,EASY-OUT,SET	
233	EXTRACTOR,PIPE,EASY-OUT,SET	
234	GRINDER,ANGLE ,110 V.	4" & 7" WHEEL
235	GRINDER,STRAIGHT,110 V.	4"-7" WHEEL
236	GRINDER,PENCIL,110 V.	1/4" - 2"
237	GRINDER,BENCH,110 V.	8"
238	GUAGE,PARALLEL BLOCKS	SET, MACHINIST
239	GAUGE, WEDGE, SET	SET, MACHINIST
240	GAUGE,FEELER, SETS	SET, MACHINIST
241	GUAGE,THREAD PITCH	SET, MACHINIST
242	GEAR PULLER,PROTO	20 TON
243	HAMMER,CARPENTER	STD. CLAW
244	HAMMER,BALL PEEN	1 LB.
245	HAMMER,SHOP	3 LB.
246	HAMMER,SLEDGE	8 & 10 LB.
247	HAMMER,BREAKER,PAVEMENT,PNEU.	40 LBS.
248	HAMMER,CHIPPING,PNEUMATIC	10 LB.
249	HAMMER,JACK,PNEUMATIC	30 LBS.,125 PSI
250	HOIST,CHAIN OPERATED	1 1/2 TON
251	HOIST,CHAIN OPERATED	5 TON

	DESCRIPTION	
252	HOIST,HANDLE OPERATED	3 TON
253	HOIST,HANDLE OPERATED	1 1/2 TON
254	JACK,PORTAPOWER,HYD., W/ 9" BASE	10 TON
255	JACK,PORTAPOWER,HYD., W/ 9" BASE	20 TON
256	JACK,PORTAPOWER,HYD., W/ 9" BASE	50 TON
257	JACK,PORTAPOWER,HYD., W/ 4" BASE	20 TON
258	JACK,PORTAPOWER, FLG.SPREADER	10 TON
259	LADDER,ALUMINUM,EXTE NSION	30 FT.
260	LADDER,ALUMINUM,"A" TYPE	12 FT.
261	LADDER,WOOD,EXTENSIO N	30 FT.
262	LADDER,WOOD,"A" TYPE	12 FT.
263	LEVEL,TORPEDO	9" LENGTH
264	LEVEL, SHOP	24" LENGTH
265	MICROMETER,DEPTH,SET	0" - 12"
266	MICROMETER,INSIDE,SET	1/2" - 12"
267	PUNCH,KNOCKOUT CONDUIT,HYD.	1/2" - 4"
268	SAW,HOLE,SET,GREENLEE, 110 V.	3/8" - 4" DIA.
269	SAW,SAWZALL, 110 V.	6"STRAIGH T BLADE
270	SAW,PORTABAND,HAND HELD, 110 V.	TO 4" CUTS
271	SAW,TABLE,ROTARY, 110 V.	20" BLADE
272	SAW,RADIAL ARM,ROTARY, 110 V.	12" BLADE

	DESCRIPTION	
273	SAW,HAND,ROTARY,CARP ENTERS,110 V.	8" BLADE
274	SAW,TILE,CIRCULAR, 110V.	6" BLADE
275	SCAFFOLD,TUBULAR,W/ CLAMPS,SET	LOT
276	SCRIBE,METAL,MACHINIT	8"
277	SCREWDRIVER SET FLAT	ASSORTED SIZE
278	SCREWDRIVER SET PHILIPS	ASSORTED SIZE
279	SQUARE,COMBINATION, MACHINIST	12" BLADE
280	SQUARE,FRAMING	24" LONG SIDE
281	SQUARE, TEE,MACHINIST	3BLADES,1 2"24"36
282	SURVEY,THEODOLITE W/ TRIPOD	W/ ALL ACCESSORI ES
283	SURVEY,LEVEL,ENGINEERS W/ TRIPOD	W/ ALL ACCESSORI ES
284	SURVEY,ROD,CHAINS,TAR GETS, SETS	W/ ALL ACCESSORI ES
285	TAPS,BOLT, UNC/UNF,W/HOLDER,SET	TO 1 1/4"
286	TAPS, BOLT,METRIC, W/ HOLDER,SET	TO 32MM
287	TAPS,PIPE, NPT, W/ HOLDER, SET	TO 2"
288	TORCH, OX/AC.,W/ GUAGES/HOSE SET	MANUAL CUTS AS REQ'D
289	TORCH,TRACK W/ HOSE/TRACK, 110 V.	AUTOMATI C PLATE CUTS

	DESCRIPTION	
290	TORQUE WRENCH,MANUAL,MACHINIST	1/2 " DRIVE
291	TORQUE WRENCH,MANUAL,MACHINIST	3/4 " DRIVE
292	TORQUE WRENCH,MANUAL,MACHINIST	1" DRIVE
293	TORQUE MULTIPLIER	4 TO 1
294	VACUUM CLEANER,INDUSTRIAL, 110 V.	1 H.P. MOTOR
295	VIBRATOR,CONCRETE,W/ ENGINE	1 1/2" - 2 1/2" STINGERS
296	VIBRATOR,CONCRETE,W/ ENGINE	1" STINGER
297	VIBRATOR,CONCRETE,AIR DRIVEN	1 1/2" - 2 1/2" STINGERS

ORGANIZATION CHART



PROJECTS



AL-ROBAYA TOWER
AL-DAHRAN

PROJECTS



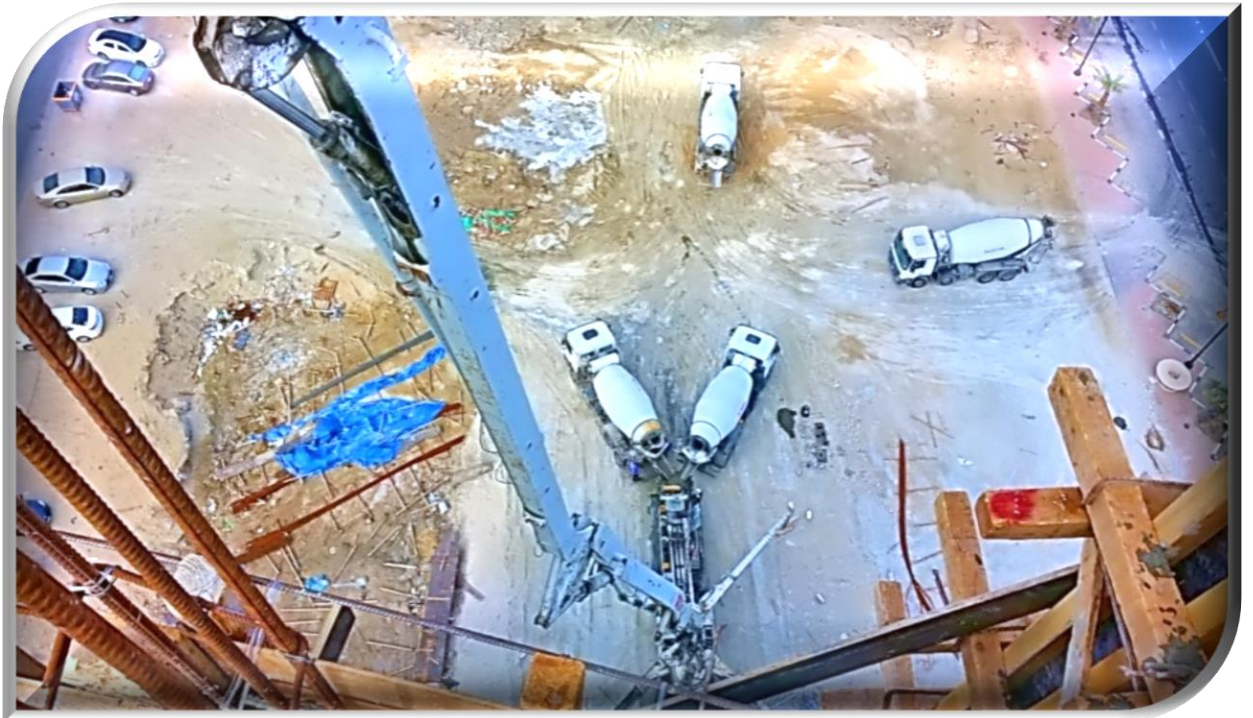
AL-ANSARI TOWER DAMMAM

PROJECTS



AL-ANSARI TOWER DAMMAM

PROJECTS



AL-ANSARI TOWER DAMMAM

PROJECTS



AL-ANSARI TOWER DAMMAM

PROJECTS



AL-KHORIYEF BUILDING INDUSTRIAL CITY 2

PROJECTS



AL-KHORIYEF BUILDING
INDUSTRIAL CITY 2

PROJECTS



AL-KHOZAMA TOWER
AL-AZEZEAH

PROJECTS



AL-ULAYAH BUILDING

PROJECTS



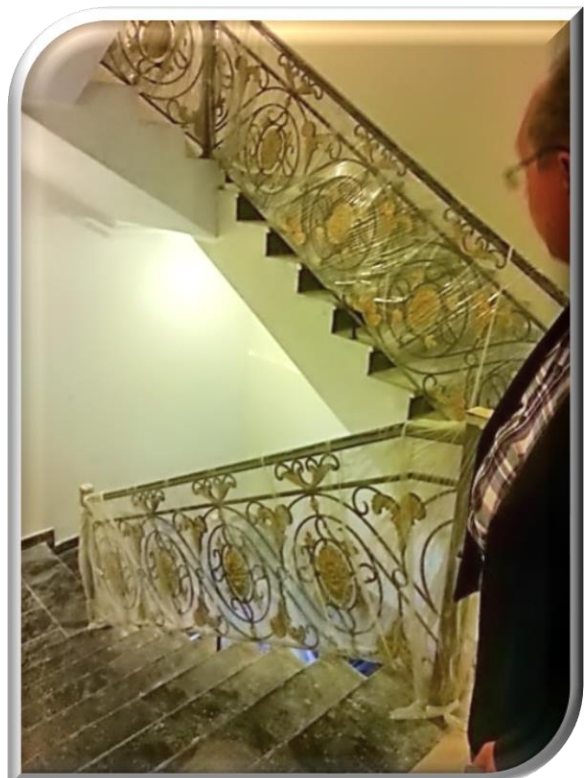
CENTER

PROJECTS



QURBA AL-DAMMAM

PROJECTS



QURBA AL-KHOBAR

PROJECTS



ABO-GASER PALACE



PRIVATE VILLA

PROJECTS



BAYT AL-KHALEEJ COMPOUND

PROJECTS



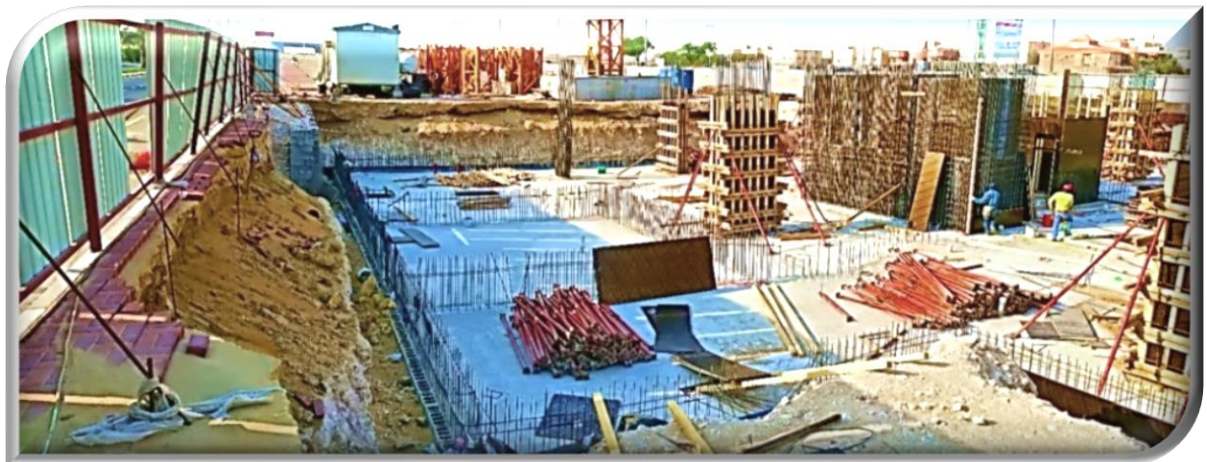
AL-ZAHRANI VILLA

PROJECTS



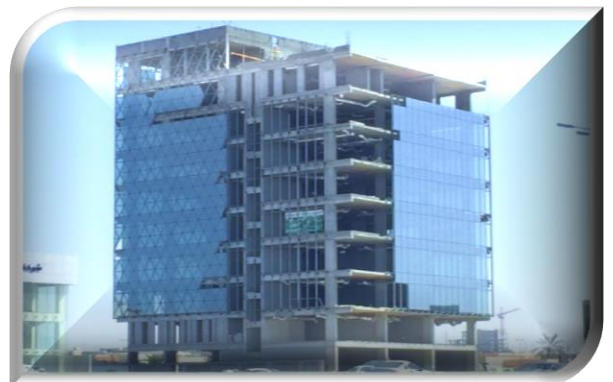
AL-JOAIB TOWER

PROJECTS



AL-JOAIB TOWER

PROJECTS



AL-JOAIB TOWER

PROJECTS



AL-JOAIB TOWER

PROJECTS



AL-QAHTANI BUILDING

PROJECTS



AL-ATAIBY BUILDING

PROJECTS



BEAUTY SEYDRA VILLAS

PROJECTS



ESAR BUILDING
AL-AZEZEAH

PROJECTS



MADA-7 BUILDINGS

PROJECTS



EEIC FACTORY INDUST.3

PROJECTS



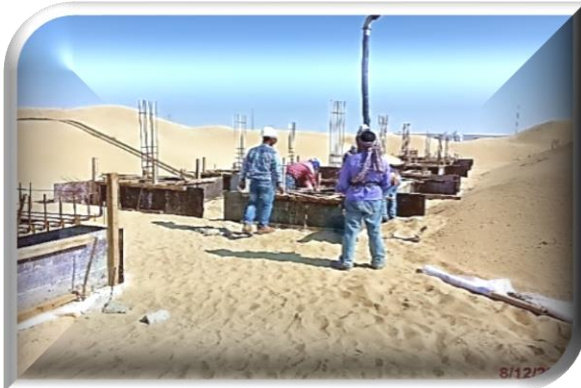
هيئة المدن الصناعية ومناطق التقنية
Industrial Property Authority
MODON

Project : **EEIC** اسم المشروع :
مؤسسة شركة الصناعات الإلكترونية والكهربائية
Electronic & Electrical Industries Corporation
Tel.: 8123725 Fax : 8123735

Owner : **EEIC** المالك :
شركة الصناعات الإلكترونية والكهربائية
Electronic & Electrical Industries Corporation
Tel.: 8123725 Fax : 8123735

Consultant : **GAP Engineering Consultants** الاستشاري :
قاب للاستشارات الهندسية
P.O. Box 5322, Governorate 21-422
Haramat St, Saudi Arabia
Tel: 013 859 4702
Fax: 013 859 5877

Contractor : **Con Valley** المقاول :
شركة وادي البناء
GENERAL CONTRACTING
وادي البناء
Con Valley
Tel.: 013 8591212 Fax : 013 8599831
Email : info@convalley.net



EEIC FACTORY INDUST.3

PROJECTS



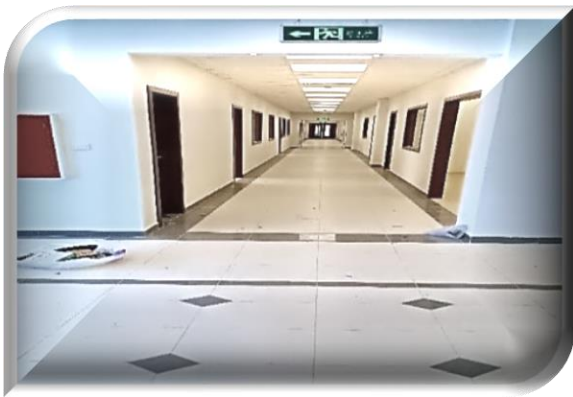
EEIC FACTORY INDUST.3

PROJECTS



EEIC FACTORY INDUST.3

PROJECTS



EEIC FACTORY INDUST.3

PROJECTS



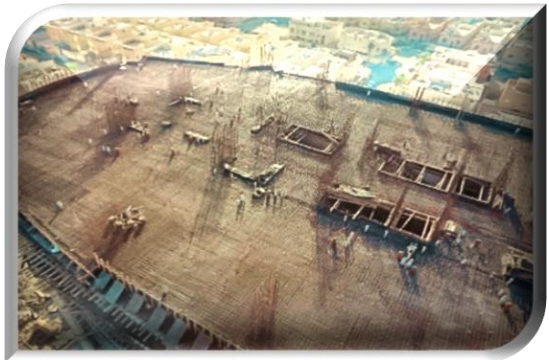
ASCOTT HOTEL

PROJECTS



ASCOTT HOTEL

PROJECTS



ASCOTT HOTEL

PROJECTS



ASCOTT HOTEL

PROJECTS



AL-KHALAF TOWER

PROJECTS



AL-KHALAF TOWER

PROJECTS



MIROT TOWER

PROJECTS



MIROT TOWER

PROJECTS



MIROT TOWER

PROJECTS



SITCO PHARMA

PROJECTS



SITCO PHARMA

PROJECTS



SITCO PHARMA

PROJECTS



SITCO PHARMA

PROJECTS



Province Deposit &
RE – Export Area

PROJECTS



Province Deposit & RE – Export Area

PROJECTS



Province Deposit &
RE – Export Area

PROJECTS



Strip Mall Azazyeah

PROJECTS



MADA VILLAS

PROJECTS

SOUTHERN PEARL PRIVATE RESIDENTIAL COMPOUND



اسم المشروع :
مشروع إنشاء وحدات سكنية وخدمية
بمجمع لؤلؤة الجنوب السكني الخاص
SOUTHERN PEARL PRIVATE RESIDENTIAL COMPOUND

المالك :
شركة المصادر الإنشائية التجارية ذ.م.م
AL MASADER AL INSHAIYA COMPANY (LLC)

LICENCE : 0/1439/000206
DATE : 22 - 08 - 1439 H
Mobile : 0563939664

إدارة المشروع :
شركة إدارة المشروعات الدولية
INTERNATIONAL PROJECT MANAGEMENT CO.



الإستشاري : تصميم وإشراف
بناء للإستشارات الهندسية
BINA ENGINEERING CONSULTING



المقاول العام للمنطقة (01) :
شركة وادي النيل -
Con Valley Co. LTD
P.O.Box - 77321
Al Shobar 21922
Kingdom of Saudi Arabia



المقاول العام للمنطقة (02) :
شركة المُرَكَّب الخليج للتجارة والمقاولات
Gulf Builder For Trading & Contracting Co.Ltd.



المقاول العام للمنطقة (03) والموقع العام :
شركة المشابرون للإنشاء والتعمير
SEDULOUS CO. FOR BUILD. & CONST.



مقاول أعمال التكيف للمنطقة (03) :
شركة مهنا مروي الخالدي للمقاولات
MMK CONTRACTING CO.



مقاول أعمال التكيف للمنطقتين (01 & 02) :
شركة بناء العربية
BUILD ARABIA COMPANY



Southern Peral Private Resident Compound

PROJECTS



Southern Peral Private Resident Compound

PROJECTS

SOUTHERN PEARL
PRIVATE RESIDENTIAL COMPOUND
AL-KHOBAR SAUDI ARABIA



SOUTHERN PEARL
PRIVATE RESIDENTIAL COMPOUND
AL-KHOBAR SAUDI ARABIA

MAIN SHOT SHOWING THE VILLAS



Southern Peral Private Resident Compound

PROJECTS

SOUTHERN PEARL
PRIVATE RESIDENTIAL COMPOUND
AL-KHOBAR-SAUDI ARABIA



SOUTHERN PEARL
PRIVATE RESIDENTIAL COMPOUND
AL-KHOBAR-SAUDI ARABIA



Southern Peral Private Resident Compound

PROJECTS



Southern Peral Private
Resident Compound

PROJECTS



Southern Peral Private
Resident Compound

PROJECTS



Sanjel Taqa

PROJECTS



Mada Aosis Project

PROJECTS



Mada Aosis Project

PROJECTS



Mada Aosis Project

PROJECTS



Mada Aosis Project

PROJECTS



Hilton Garden Inn

PROJECTS



Hilton Garden Inn

PROJECTS



AL Fareedah Project

PROJECTS

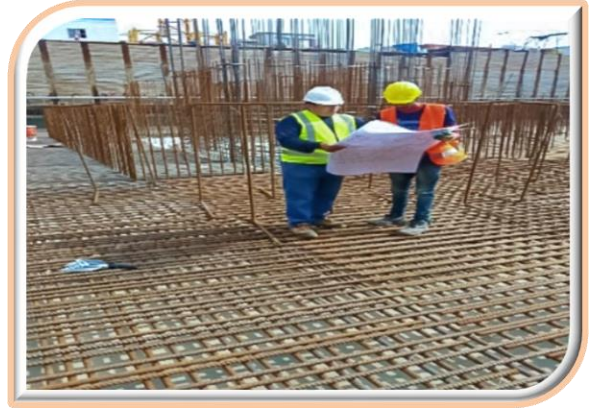


AL Fareedah Project

PLUMBING WORKS



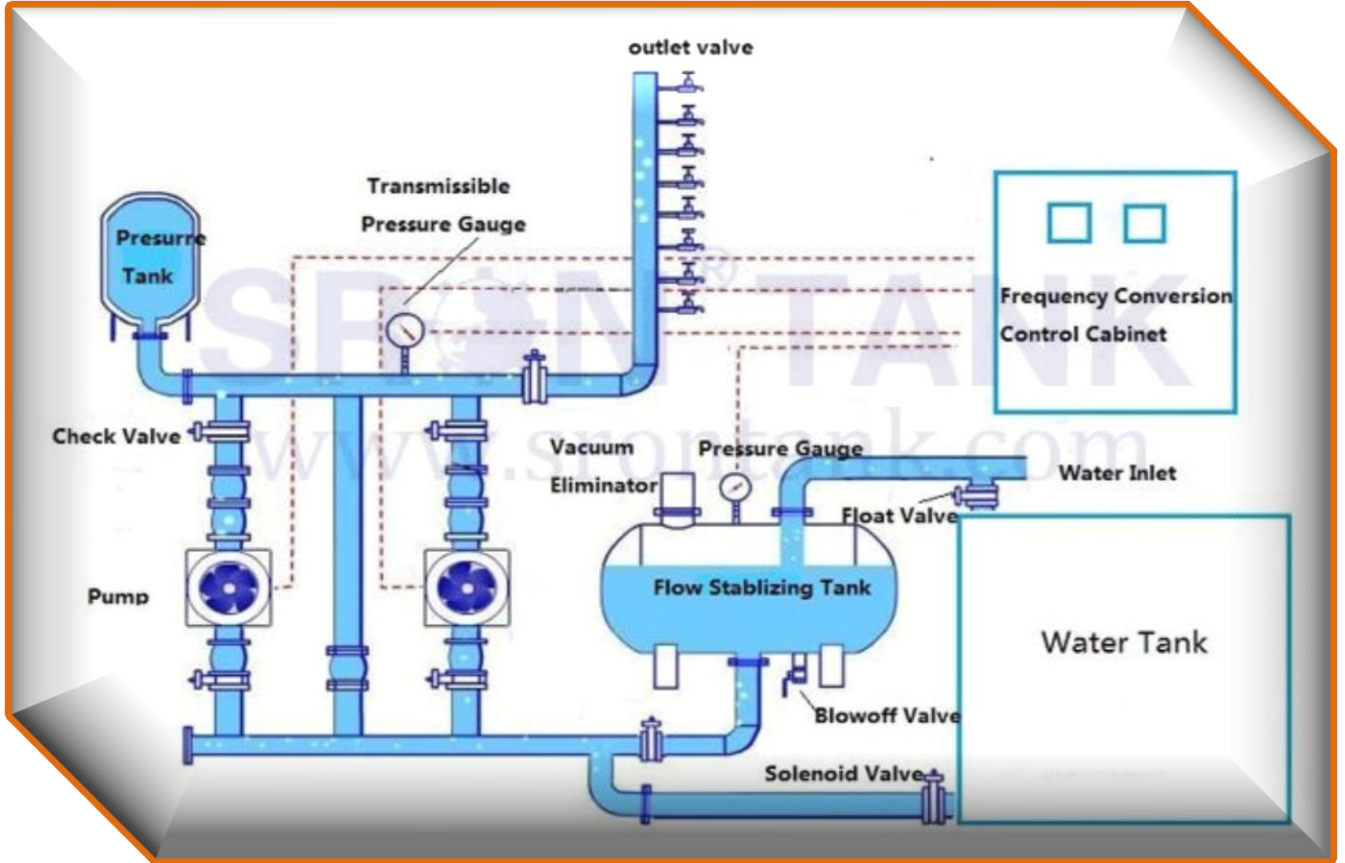
PLUMBING WORKS



PLUMBING WORKS



PLUMBING WORKS



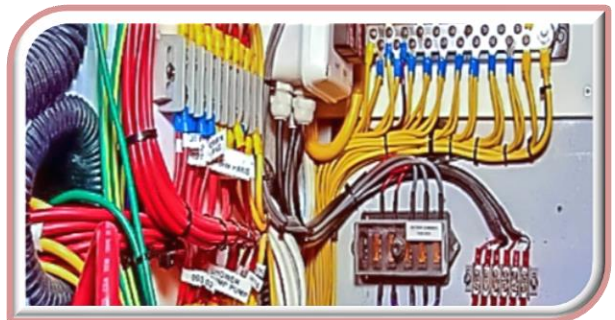
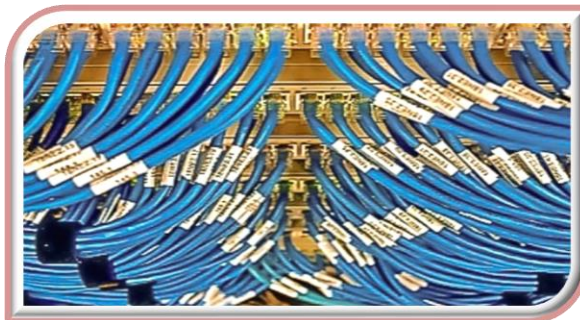
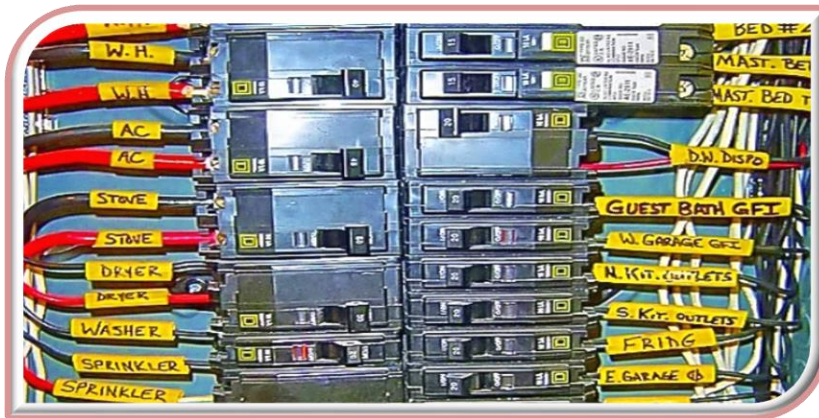
ELECTROMECHANICAL WORKS



ELECTROMECHANICAL WORKS



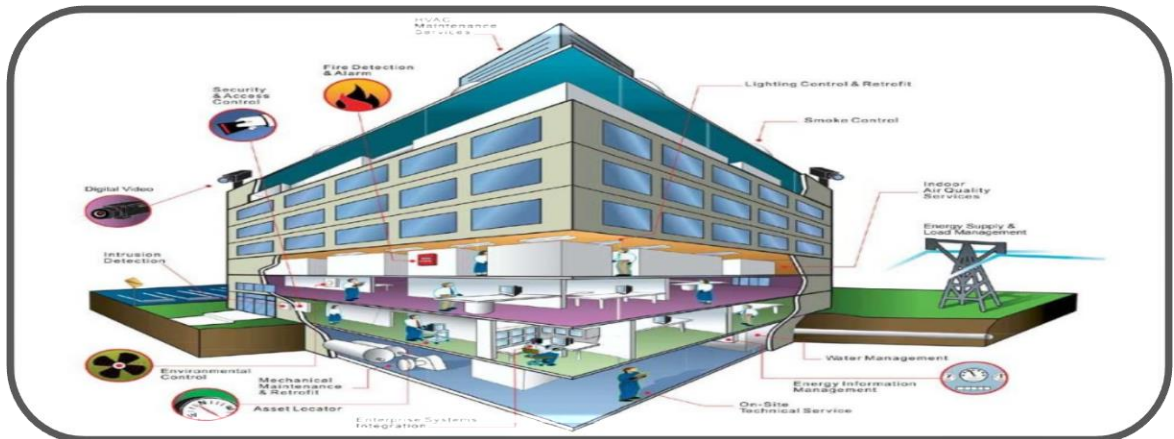
ELECTROMECHANICAL WORKS



ELECTROMECHANICAL WORKS



ELECTROMECHANICAL WORKS



COMPANY INFORMATION

COMPANY NAME

**CONVALLEY GENERAL
CONTRACTING**

**ADDRESS
MAIN OFFICE**

**P.O. BOX 77331, KHOBAR 31952,
SAUDI ARABIA**

TEL: [03] 889 2000

TEL: [03] 859 1212

FAX: [03] 859 9831

Email: info@convalley.net

WEBSITE: www.convalley.net

CONTACT

**ADEL KAMAL , PROJECTS
MANAGER**

adel@convalley.net

MOBILE: 0 530 222 575



رقم الشهادة: ١٠٤٠٤٦٠٧٦
التاريخ: ١٤٤٠/٠٩/٢٩ هـ
الرقم المميز: ٣٠١١٧٧٥٦٥١



الهيئة العامة للزكاة والدخل
General Authority of Zakat & Tax

المملكة العربية السعودية
الهيئة العامة للزكاة والدخل
General Authority of Zakat & Tax

شهادة CERTIFICATE

تشهد الهيئة العامة للزكاة والدخل بأن المكلف / شركة وداي البناء للمقاولات العامة المحدودة
شركة رقم ٧٠٠١٨٧٩٩٥١ رخصة رقم ٤٣٢/١٢١٩
قدم إقراره عن الفترة المنتهية في ٢٠١٨/١٢/٣١

وقد منح هذه الشهادة لتمكينه من إنهاء جميع معاملاته بما في ذلك صرف مستحقاته
النهائية عن العقود.

يسري مفعول هذه الشهادة حتى تاريخ ١٤٤١/٠٩/٠٧ هـ الموافق ٢٠٢٠/٠٤/٣٠ م.
(السابع من رمضان ألف و أربعمئة و واحد و أربعون هجري)

الفروع (١) في النموذج المرفق



الختم الرسمي

هذه الوثيقة مستخرجة من النظام الآلي ولا تحتاج إلى توقيع
لا يعتد بهذه الشهادة إلا بعد التحقق من موقع الهيئة www.gazt.gov.sa

الرقم ١٩٥٨٤

التاريخ ١٤٤١/٠٢/١٥

رقم الملف ١٩٠١٦

مصدره : الخبر

هاتف : ٠١٣٨٥٩١٢١٢



وزارة الشؤون البلدية والقروية
Ministry of Municipalities and Urban Planning
Kingdom of Saudi Arabia

شهادة تصديق للمقاولين

الجمهورية العربية السعودية
وزارة الشؤون البلدية والقروية
وكلالة الوزارة لشؤون تصنيف المقاولين

رقم ٢٢٧٦٤

اسم المقاول : شركة وادي البناء للمقاولات العامة
نوع الملكية : شركة ذات مسؤولية محدودة
رقم السجل التجاري : ٢٠٥١٠٤٤٧٦٣
العنوان : ص. ب. ٣٠٣٤٠ الدمام ٣١٩٥٢
مجال التصنيف

الدرجة

الثالثة
الرابعة
الخامسة
الخامسة
الخامسة
الخامسة
الخامسة

تاريخه : ١٤٣٢/٠٢/١٩
فاكس : ٠١٣٨٨٩٧٧٢٥

وكيل الوزارة لشؤون تصنيف المقاولين المكلف

م / سعود بن حمدان الذكرى

تنتهي صلاحية هذه الشهادة بتاريخ : ١٤٤٥/٠٢/١٥ هـ

(مصنف في سبعة مجالات فقط)
للمصنف



ملاحظة هامة جداً : يجب مطابقة الصور على الأصل في كل حالة
كل كسب أو تغيير في هذه الشهادة يلغونها